



Logtag Temperature Logger

The Logtag Temperature Logger is designed for a temperature range of -40°C to 85°C. The Logtag has LCDs that lets you see at a glance that the system is working and if there has been a problem. At the press of a button, it allows you to mark significant events during its recording cycle, such as the door being left open, or a new delivery.

Uses

- Cold Chain Management
- Pharmaceutical Environments
- Medical Environments
- Agricultural Production
- Transport
- Shipping
- Monitoring of catering equipment
- Fast Food Outlets
- Cafés
- Restaurants
- HVAC Systems
- Storage and Warehousing
- Medical and Agricultural Research
- Monitoring of machinery and equipment

Features and Benefits

- Automatic recording of temperature
- Easy to download information
- Reusable
- Robust
- Visual Alarm (LED) indicates temperature limit violation
- No need for External Probes, but external probes available
- Cleanable
- HACCP Compliant
- NATA Certifiable

What is a Temperature Logger? The Logtag Temperature Logger is a “thermometer with a memory” that has been designed to record temperatures up to -40°C to 85°C. The memory will hold between 16,000 temperature readings.

Uses Logtag Software and Logtag reader to record and save your results.

How is it Used?

1. Set up how often you want the temperature recorded with the user-friendly Logtag software.
2. Place the Logtag into the area where temperature is to be logged.
3. When required plug the Logtag back into the computer and see exactly what happened, when and for how long.
4. Save your results for later reference.

Specifications

Minimum Temperature	-40°C	Size	86mm x 54.5mm x 8.6mm
Maximum Temperature	85°C	Delay Start	Up to 45 days
Accuracy	0.5°C; 0.7°C; 0.8°C	Resolution	0.2°C or 0.1°C
Sample Rate	Programmable 1sec to 255 min	Log Storage Size	16000 readings
Housing Material	Polycarbonate	Guarantee:	1 year

Logtag Accessories

Kits

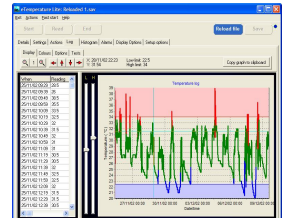
The Logtag kit is made up of the easy to use Logtag software, the Logtag reader and a case. The logtag software can be freely copied onto multiple PCs and the reader moved between those PCs.

Logtag Software

Logtag software allows you to quickly and easily

- Set up the Logtag sample rate, start delay, high and low alarms and rollover options
- Download the results from the Logtag to the PC
- Display results as a table
- Display the results as a graph. The graph supports panning and zooming to easily identify problems
- Save results for a later recall
- Export results to Microsoft excel, Microsoft Word
- Email results

(Minimum PC requirements: Pentium 200MHz; Windows 98,NT3.5, 2000, XP, 32Mmemory, 5MHDD free, mouse, CD-ROM.)



Reader

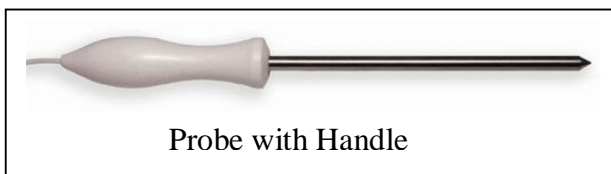


A reader (also known as a cable adaptor) is required to connect the Logtag to the PC. The reader has a USB connector for your PC

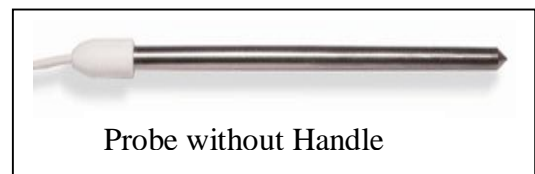


Probes

There are probes that are compatible with the Logtag. These can be inserted into the object that needs its temperature or humidity logged. Two probes are available. One that has a handle and one that does not have a handle. Cable lengths are 1.5 metres and 3 metres. (3 metre cables not in stock, please allow 1 week for manufacture.)



Probe with Handle



Probe without Handle